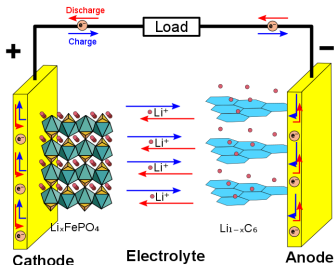


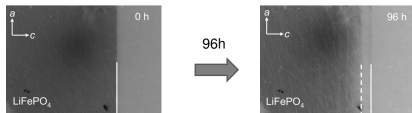
Lithium-Ion Battery



- Li⁺
- ◈ FeO₆
- ◄ PO₄
- ◈ C₆

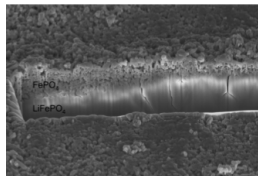
→ chemical reactions at the surface:
non-linear Newton boundary condition

Phase Separation



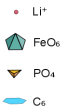
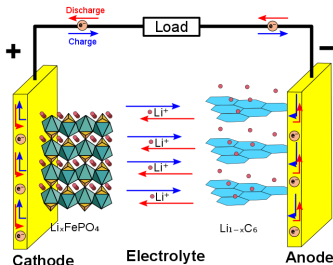
→ Cahn-Larché equations

Formation of Damage



→ doubly non-linear rate-dependent
differential inclusion

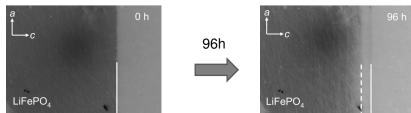
Lithium-Ion Battery



→ chemical reactions at the surface:
non-linear Newton boundary condition

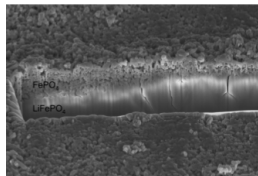
Mathematical model and proof of existence of solutions → Poster

Phase Separation



→ Cahn-Larché equations

Formation of Damage



→ doubly non-linear rate-dependent differential inclusion